



ACCESSORIES

ALO TA10/12/13

ALO H7

ALO 22-01

ALO 81-60/83-60

ALO 81-57/81-58

ALO 81-80

ALO 177-DCT

ALO 176-DUMP

ALO 177xM

ALO 181/183 VISION

ALO 185-011/012

ALO 820/822

ALO 825/826

ALO 830/831

ALO 863-CTL/-HD

ALO 880/881

ALO 880-CTL

ALO 61201/61207

ALO 61601/61602

ALO 90915/16/17/18

ALO 90915/16/17/18-S

PNEUMATIC CUTTING TOOL FOR STEEL BAND

PNEUMATIC PUNCH TOOL

TABLE TOP SHEARS

HAND HELD SET GAUGE

TABLE TOP SET GAUGE/PRINTER FOR DIGITAL SET GAUGE

TOOTH HEIGHT GAUGE

PAYOFF TABLE FOR CRATER OR UNCRATED COILS

TABLE MAGAZINE FOR BAND SAW BLADES

ACCUMULATING MAGAZINE FOR BAND SAW BLADES

TOOTH POSITION VISION SYSTEM FOR ALO SETTERS

AUTO SYMMETRY CONTROL KIT FOR ALO BAND SAW BLADE SETTERS

COILER FOR BAND SAW BLADES

ELECTRICAL DRIVEN LOOP TABLE AND MECHANICAL BRAKE UNIT

ELECTRICAL DOUBLE COILER FOR BAND SAW BLADES

HEAVY DUTY ELECTRICAL COILER FOR BAND SAW BLADES

ELECTRICAL COILER FOR BAND SAW BLADES

ELECTRICAL COILER FOR BAND SAW BLADES

GRINDING FIXTURE FOR SETTING TOOLS

GRINDING FIXTURE FOR CUTTING EDGES

COLLAPSIBLE COIL CENTRE

SAFETY COIL CENTER WITH AUTO BAND LOCK



ALO TA-10, TA-12 & TA-13

Pneumatic cutting tools for steel band

Air hydraulic cutting tools with a design that allows the user to work using rapid strokes and considerable force. The cut is burr free. The TA-tool are easy operated and carries out the work quickly and smoothly, both at fixed workstations and in direct contact with the installation. The tools are both light weight and well balanced to minimize the strain on the user. The air hydraulics also mean that they run silently and is completely vibration-free. The tool has few moving parts and has an extremely high level of operator reliability. We can guarantee both a complete stock of spare parts and rapid service when required.



TA-10 for steel band up to 33 x 2.5 mm

TECHNICAL SPECIFICATION TA-10:

Max band width:	32 mm
Max band thickness:	2.5 mm
Weight:	1.2 kg
Cutting pressure:	10 kN at 6 bar
Length:	259 mm
Cylinder Ø:	52 mm



TA-12 for steel band up to 50 x 2.5 mm

TECHNICAL SPECIFICATION TA-12:

Max band width:	50 mm
Max band thickness:	2.5 mm
Weight:	1.9 kg
Cutting pressure:	20 kN at 6 bar
Length:	375 mm
Cylinder Ø:	68 mm



TA-13 for steel band up to 80 x 1.6 mm

TECHNICAL SPECIFICATION TA-13:

Max band width:	80 mm
Max band thickness:	1.6 mm
Weight:	2.3 kg
Cutting pressure:	14.2 kN at 6 bar
Length:	455 mm
Cylinder Ø:	68 mm

ALO H7

Pneumatic punching tool for steel band



The perfect tool to mark band faults!
 ALO H7 is an air hydraulic hole punching tool. The design allows the user to work using rapid strokes and considerable force. The hole is burr free. The tool is both light weight and well balanced to minimize the strain on the user. The air hydraulic also mean that the tool runs silently and is completely vibration free. The tool has few moving parts and has an extremely high level of operational reliability. The tool is available in two sizes and two different models (straight or 90°cutting head).

TECHNICAL SPECIFICATION: H7-530

Weight: 1.9 kg
 Cutting pressure at 6 bar (90 psi): 24 kN
 Length: 368 mm
 Cylinder Ø: 68 mm



H7-530R

Weight: 2.3 kg
 Cutting pressure at 6 bar (90 psi): 24 kN
 Length: 450 mm
 Cylinder Ø: 68 mm



TECHNICAL SPECIFICATION: H7-730:

Weight: 2.2 kg
 Cutting pressure at 6 bar (90 psi): 40 kN
 Length: 370 mm
 Cylinder Ø: 86 mm



H7-730R

Weight: 2.6 kg
 Cutting pressure at 6 bar (90 psi): 40 kN
 Length: 452 mm
 Cylinder Ø: 86 mm



H7 530 CAPACITY*(plate thickness mm):

Punch Ø	Aluminium	Steel(1311)	Stainless
4 mm	-	4.0	3.5
5 mm	-	3.8	2.9
6 mm	4.5	3.0	2.4
7 mm	4.0	2.5	2.0
8 mm	3.5	2.2	1.8

H7 730 CAPACITY*(plate thickness mm):

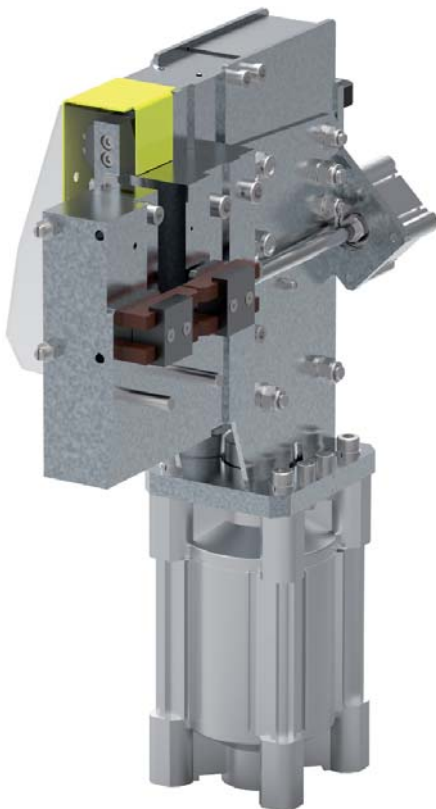
Punch Ø	Aluminium	Steel(1311)	Stainless
4 mm	4.0	4.0	4.0
5 mm	4.0	4.0	4.0
6 mm	4.0	4.0	4.0
7 mm	4.0	4.0	3.5
8 mm	4.0	4.0	3.0

* = At air pressure 6 bar or 90 psi



ALO 22-01

Table top shear model A - Cylinder down, vertical band
Table top shear model B - Cylinder up, vertical band



Model A, cylinder down



Model B, cylinder up

The shear 22-model is ideal to attach to the end of a worktable or at a location where space is limited. This shear assembly is used in all ALO machines that do cutting of bands and have well proven to successfully cutting the toughest band saw blade with ease. The design is robust and gives you high availability and trouble-free cutting.

The cutting edges are made out of ASP materials that have good wear resistance properties and are hardened to 64HRC

The fixed front cutting edge is mounted in a massive steel base to withstand with the forces and stress generated during cutting of the hardened band saw blades.

Each shear can be delivered in two different basic versions A or B, to suit your demands regarding the position of the cylinder and the cutters.



The new improved shear unit attached to a machine

The actual shearing movement is made by the back cutting edge that is mounted in a system of steel rods and bushings, forcibly guided with a powerful air cylinder.

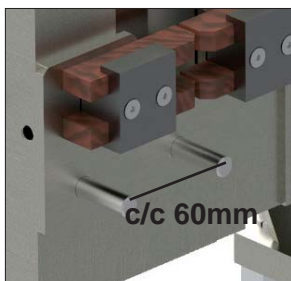
The cutting edges are easy to dismantle for service or replacement.

The front cutting edge can be rotated and every corner can be used before sharpening. Both cutting edge positions can be adjusted to compensate for wear/consumption of the edge.

The rear cutting edge is mounted at an angle and ground with a draft angle to ensure smooth cutting of the saw blades with a straight and burr free cutting surface on the saw blade.

Together with the option 22-TSH, the position of the cylinder can be mounted backwards for horizontal band.

The command can be delivered with foot, single or two-hand control.



NOTE:

When attaching the table shear to the end of a worktable the premade holes have a c/c distance of 60mm.

OPTIONS:

20-20 = Single hand operated
20-30 = Double hand operated
20-40 = Foot pedal operated

22-TSH = For horizontal band

SHEAR BLADE SET:

20-25 = 100 mm

CAPACITY:

Band width:	6 - 100 mm	
Band thickness:	up to 1.6 mm	
Air pressure:	6.3 bar	91 psi
Cutting power at 6.3 bar/91 psi	2500 kg	
Air consumption:	1.2 l / cut	
Weight:	41 kg	
Space requirement - A:	550 x 403 x 157 mm	
Space requirement - B:	575 x 403 x 157 mm	



ALO 81-60 ALO 83-60

Set gauge with digital indicator



Model 81-60-D



Model 81-60-M, -F

This is an ideal measuring instrument for every set operator. With its trustful design and pistol grip it's easy to handle. The gauge is made in aluminium with all of the wear parts made out of tungsten carbide.

The high quality indicator is well protected and easy to calibrate. The gauge can be used to measure the set on both band saws and saw blades.

MODELS:

81-60-D and 83-60-D	Set gauge with Mahr digital indicator
81-60-M and 83-60-M	Set gauge with Mahr metric dial
81-60-F and 83-60-F	Set gauge with Mahr inch dial

TECHNICAL SPECIFICATION:

81-60 -D, 81-60-M, 81-60-F

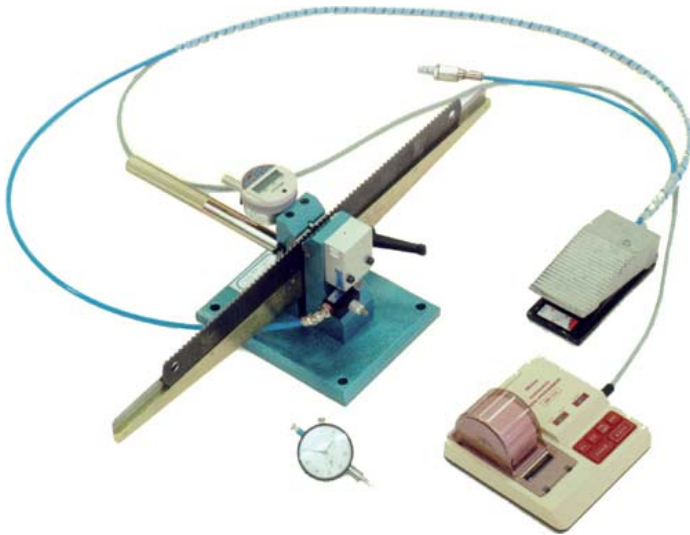
Min band width:	11 mm
Max tooth gullet:	5 mm
Weight:	0.6 kg
Size:	75 x 90 x 40 mm

83-60-D, 83-60-M, 83-60-F

Min band width:	23 mm
Max tooth gullet:	11 mm
Weight:	0.6 kg
Size:	75 x 90 x 40 mm

ALO 81-57

Table top set gauge



A precision instrument to check set on any blade or cut band. Measure blade or band 1 - 6 TPI (with spacer) or 6 - 32 TPI (without spacer) up to 75 mm. A pneumatic clamp system will lock the blade while measuring.

Mechanical dial will measure hundreds of a millimetre or thousands of an inch. Digital indicator will measure inch and metric and available with two different tolerances. The gauge could be placed on top of a table or on a special floor stand.

MODELS:

- 81-57-M Mechanical dial, metric reading
- 81-57-F Mechanical dial, inch reading
- 81-57-D Digital indicator for metric and inch reading tol. 0.02 mm or 0.001"
- 81-57 DL Digital indicator for metric and inch reading tol. 0.003 mm or 0.00015"

OPTIONS:

- 81-58 Printer
- 81-59-A Floor stand for gauge
- 81-59-B Floor stand for gauge and printer

ALO 81-58

Printer for digital set gauge

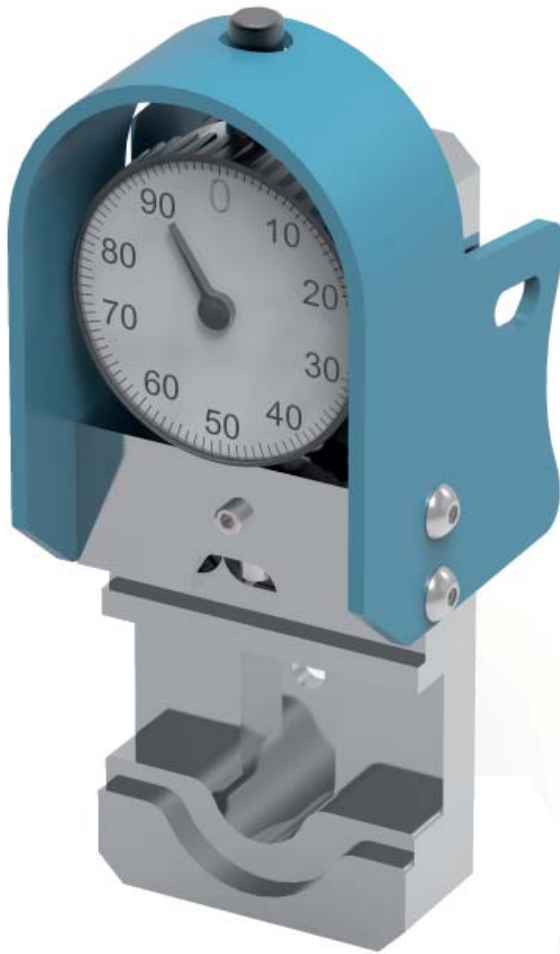


Mitutoyo thermal printer can be used to all ALO gauges with Mitutoyo digital indicator. Print reports of your measurements showing each measured teeth, average, spread as well as max and min readings.



ALO 81-80

Tooth height gauge



The Tooth height gauge is a mechanical precision instrument for checking the tooth height of saw blades and band knives.

This is an ideal measuring instrument for every set operator, tooth grinding/milling operator or band knife grinding operator.

The design is trustful and the gauge is easy to operate. It is made of aluminum with all of the wear parts made out of tungsten carbide.

The high quality indicator is well protected and easy to calibrate.

MODELS:

81-80	Set gauge with Mahr dial indicator
81-80-D	Set gauge with Mahr digital indicator

TECHNICAL SPECIFICATION:

81-80	
Min band width:	12 mm
Max:	70 mm
Weight:	0.5 kg
Size:	200 x 70 x 70 mm

ALO 177-DCT

Payoff table for crated or uncrated coils



ALO 177-DCT

177-DCT is a non-powered payoff table designed for pulling band saw blades directly from crates with the ALO's cut to length machines.

It can be equipped with one or two non-powered coil plates, 174-CPL that rolls on bearings, that will make it possible to use the table for open band saw coils.

The top section on the table can be rotated, letting you have two different crates or coils ready to use at the time. The crate are locked and hold in place by a mechanical locking device.

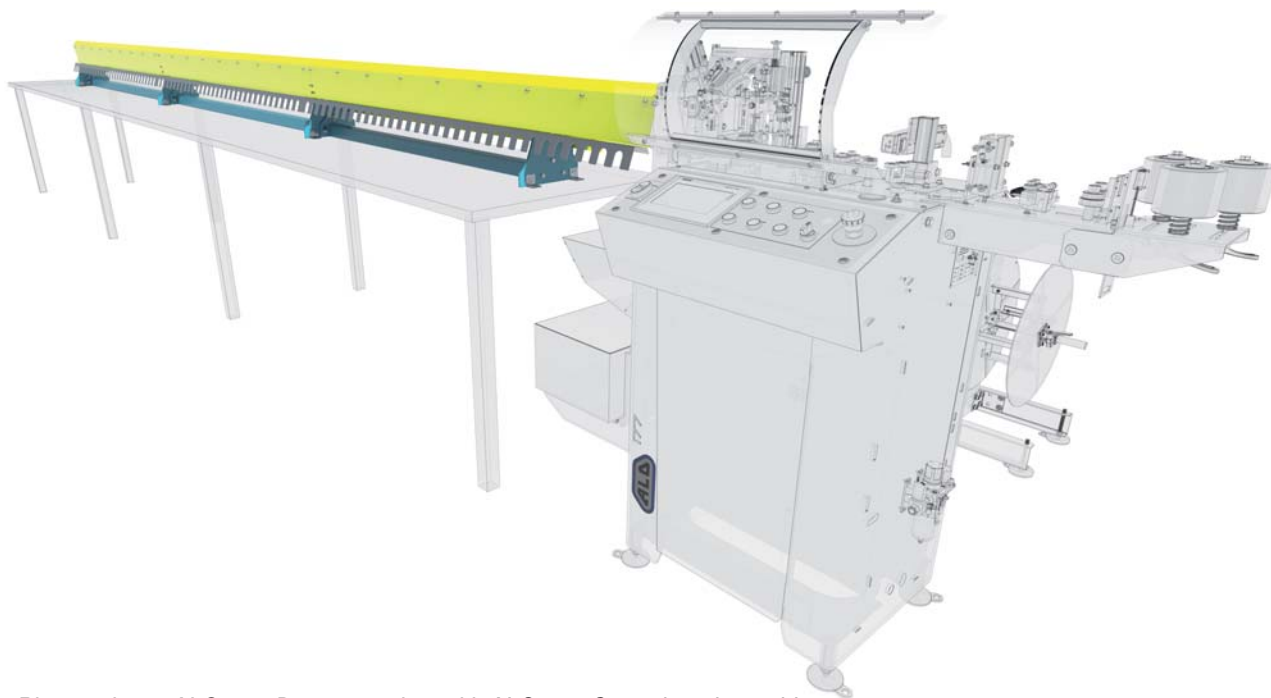
CAPACITY:	
Max crate size:	685 mm x 785 mm
Min crate size:	230 mm x 230 mm
Max. coil outer size*:	775 mm
Table height:	1100 mm
Table height adjust.:	-0 / +20 mm
Space requirement:	1750 Ø mm
Max crate/coil weight:	300 kg

* When equipped with 174-CPL



ALO 176-Dump

Table magazine for band saw blades



Picture shows ALO 176-Dump together with ALO 177 Cut to length machine.

ALO 176-Dump

The best way to collect your band saw blades after a cut to length machine is to use one of ALO's magazine. The magazine makes the process after the cut to length easy and gather the blades in a safe way. Using a magazine minimizing the risk of damaging the teeth of the saw blade.

ALO 176-Dump will allow the user to utilize more of the ALO CTL operation speed and production capacity. 176-Dump is placed on a table next to your cut to length machine. The blade is fed out from the CTL machine into 176-Dump. When the cut is performed, the magazine slides the blade out on the table with the back of the blade first to protect the teeth.

It is easy to find the right length of the magazine that your production needs. With two meters sections, the magazine can be added up to a desired length.

Note that emergency stop button should be installed by customer on the table the magazine is mounted on. If the magazine is sold with a 177 CTL the 177 is prepared for a 2 channel emergency stop circuit.

TECHNICAL SPECIFICATION:

176-Dump:	Band width:	12 - 100mm
	Band length:	2m- no upper limit

*Two meter sections can be added up to a desired length
(x=length in meter, example 176-Dump12M)*

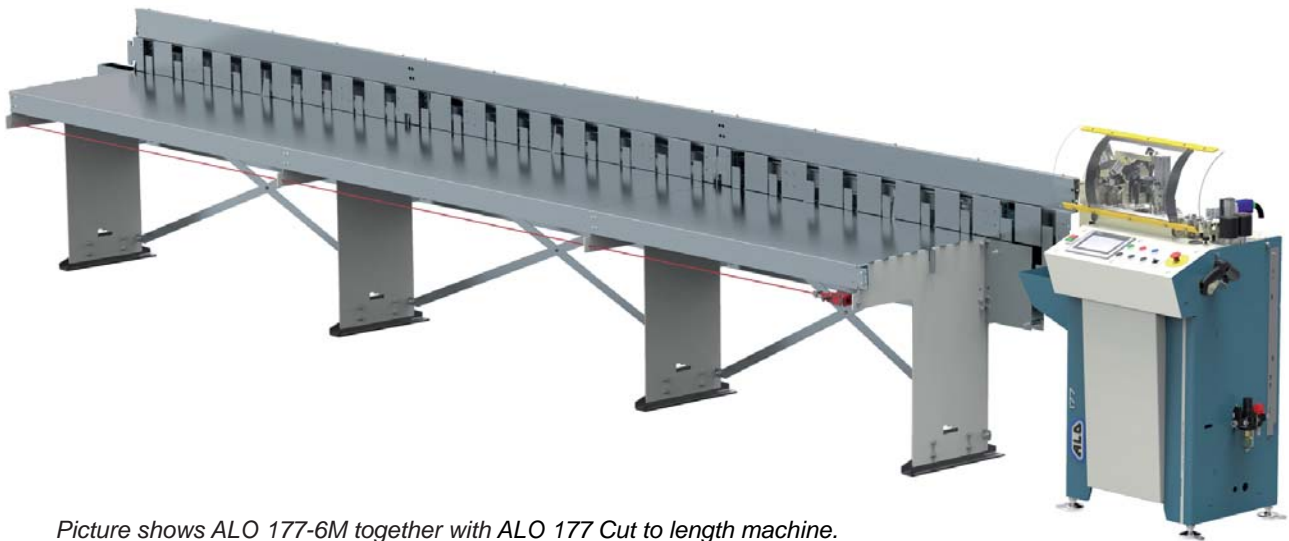


SWEDISH QUALITY
WITH RESPECT FOR THE
ENVIRONMENT AND
SAFETY REGULATIONS



ALO 177-(x)M

Accumulating magazine for band saw blades



Picture shows ALO 177-6M together with ALO 177 Cut to length machine.

ALO 177-xM

The best way to collect your band saw blades after a cut to length machine is to use one of ALO's magazine. The magazine makes the process after the cut to length easy and gather the blades in a safe way. Using a magazine minimizing the risk of damaging the teeth of the saw blade.

ALO 177-xM will allow the user to utilize more of the ALO CTL operation speed and production capacity. The blade is fed out from the CTL machine into a pneumatically operated feed out tray.

When the cut is performed, the blade are dropped and an automatic accumulating motion stacks the blades standing with teeth up. The wide collect tray can be used as a storing surface allowing room for several cutting orders/batches.

It is easy find the right length of the magazine that your production needs. With two meters sections, the magazine can be added up to a desired length.

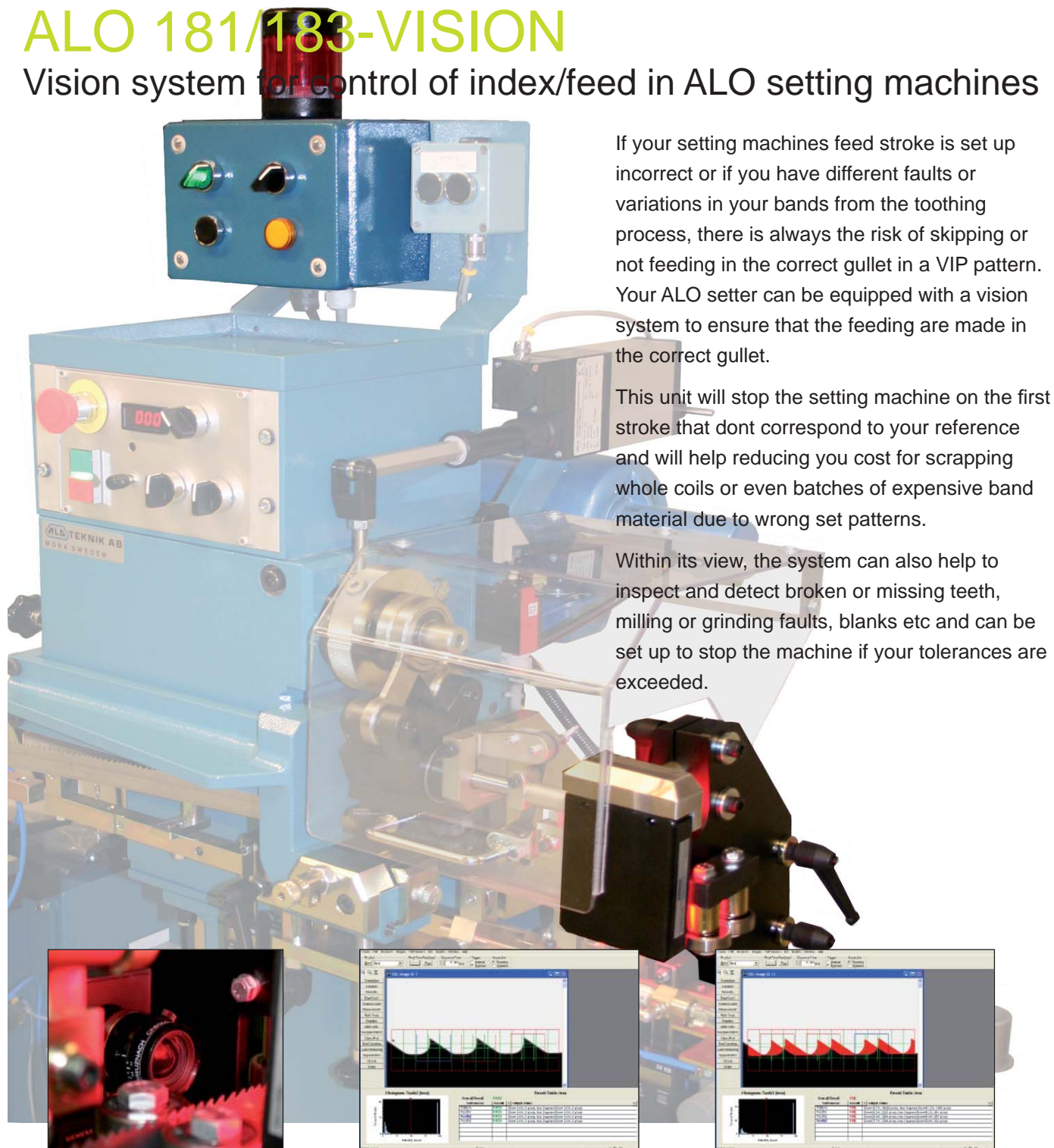
TECHNICAL SPECIFICATION:

177-model:	Band width:	12 - 100mm
	Band length:	2m- no upper limit

*Two meter sections can be added up to a desired length
(x=length in meter, example 177-12M)*

ALO 181/183-VISION

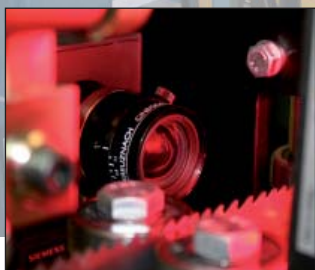
Vision system for control of index/feed in ALO setting machines



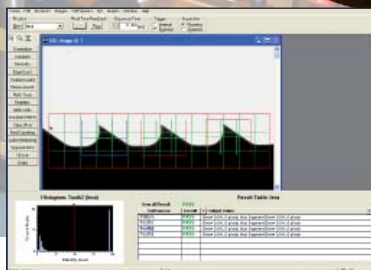
If your setting machines feed stroke is set up incorrect or if you have different faults or variations in your bands from the toothing process, there is always the risk of skipping or not feeding in the correct gullet in a VIP pattern. Your ALO setter can be equipped with a vision system to ensure that the feeding are made in the correct gullet.

This unit will stop the setting machine on the first stroke that dont correspond to your reference and will help reducing you cost for scrapping whole coils or even batches of expensive band material due to wrong set patterns.

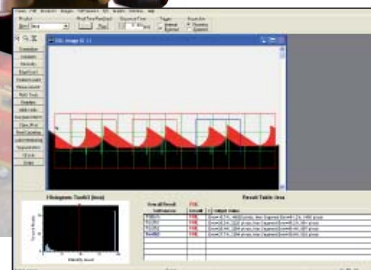
Within its view, the system can also help to inspect and detect broken or missing teeth, milling or grinding faults, blanks etc and can be set up to stop the machine if your tolerances are exceeded.



The vision system is fixed on the in feed side of the machine



The soft sensors are created and can be monitored with the included software

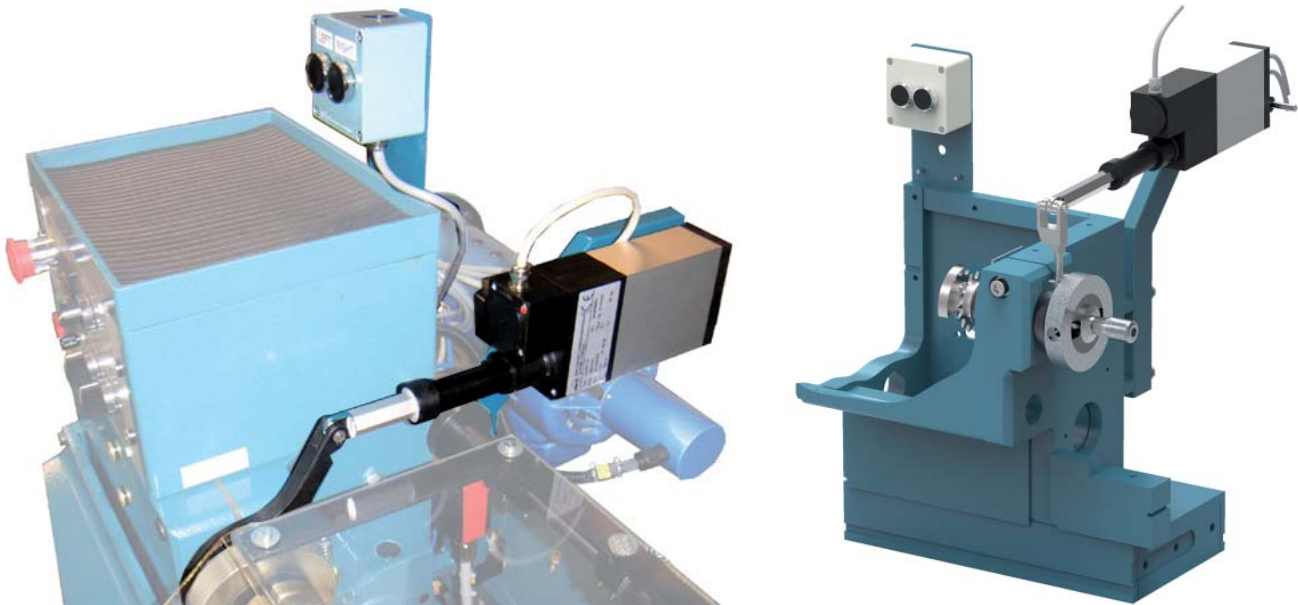


If the error (red) exceeds your tolerances the machine will be stopped

Note: The vision system is designed for ALO setting machines 181,182 and 183 only.
 The system requires a PC for creating and editing vision cameras soft-sensors.

ALO 185-011 ALO 185-012

Kit for auto symmetry adjustment on ALO band saw setting machines



The most frequent and most important set adjustment when setting a band saw is the symmetry adjustment. The new versions of the SGS software (5.01 and later) will now allow the ALO 185 set gauge to control the set symmetry and continuously make adjustments by means of a servo motor. This will give you advantages such as less stops for operator adjustments, possibility to keep a tighter symmetry / balance tolerance on your bands, and a lower scrap percentage due to miss adjustments.

The kit includes all mechanical parts, I/O board and electrical components to install the auto symmetry adjustment on any ALO band saw setting machine, old or new.

The kit requires that the setting machine is standing together with the ALO 185 set gauge.

AVAILABLE VERSIONS:

- | | |
|---------|-------------------------|
| 185-011 | For ALO 181 setters |
| 185-012 | For ALO 182/183 setters |

Note: SGS Software 3.51 or later must be installed on ALO 185 PC, NOT included.



ALO 820

Coiler for band saw blades



ALO 820

Has a sturdy design by the means of a welded steel frame and with aluminium coiler plates. The coiler are supplied with collapsible centre with auto band lock, facilitating coil changing.

Equipped with an air motor which gives many advantages such as smooth acceleration and deceleration. By the use of a pressure regulator and air flow valve, both power and velocity can be controlled.

The 820 coiler can be operated both clockwise or counter clockwise and used as payoff or take up coiler.

Alternative air motor ratings
(at 7 bar / 101 psi)

4 AM - produces 1.5 hp and 200 rpm

6 AM - produces 3 hp and 190 rpm

8 AM - produces 5 hp and 150 rpm

STANDARD 820 COILERS:

820 8 R	Motor Type 8 AM, with pressure regulator. Band widths 15 - 80 mm
820 8 RV	Motor Type 8 AM, with pressure regulator and valve. Band widths 15 - 80 mm
820 6 R	Motor Type 6 AM, with pressure regulator. Band widths 10 - 50 mm
820 6 RV	Motor Type 6 AM, with pressure regulator and valve. Band widths 10 - 50 mm
820 4 R	Motor Type 4 AM, with pressure regulator. Band widths 6 - 30 mm
820 4 RV	Motor Type 4 AM, with pressure regulator and valve. Band widths 6 - 30 mm
820	With friction brake, without motor.
820-T	Tilted coiler plate, uncoiling band from coil centre. Without motor.

TECHNICAL SPECIFICATION:

Coiler ID:	* 300 - 315 mm or * 435 - 450 mm
Coiler OD:	* 820 mm
Max coil weight:	300 kg
Air pressure:	6.3 bar 91 psi
Coiler height:	* 960mm
Coiler height adjustment:	±40 mm
Coiler speed:	0-200 rpm with standard gearing
Space requirement (l x w x h):	1300 x 950 x 1200mm
Weight:	75 kg

* standard size, other sizes available on request

ALO 822

Double coiler for band saw blades



ALO 822

Has a sturdy design by the means of a welded steel frame and with aluminium coiler plates. The coiler are supplied with collapsible centre with auto band lock, facilitating coil changing. The top part of the coiler can be rotated and are locked in position by a foot operated mechanism.

Equipped with air motors which gives many advantages such as smooth acceleration and deceleration. By the use of a pressure regulator and air flow valve, both power and velocity can be controlled. The 822 coiler can be operated both clockwise or counter clockwise and used as payoff or take up coiler.

Alternative air motor ratings
(at 7 bar / 101 psi)

4 AM - produces 1.5 hp and 200 rpm

6 AM - produces 3 hp and 190 rpm

8 AM - produces 5 hp and 150 rpm

STANDARD 822 COILERS:

822 8 R	Motor Type 8 AM, with pressure regulator. Band widths 15 - 80 mm
822 8 RV	Motor Type 8 AM, with pressure regulator and valve. Band widths 15 - 80 mm
822 6 R	Motor Type 6 AM, with pressure regulator. Band widths 10 - 50 mm
822 6 RV	Motor Type 6 AM, with pressure regulator and valve. Band widths 10 - 50 mm
822 4 R	Motor Type 4 AM, with pressure regulator. Band widths 6 - 30 mm
822 4 RV	Motor Type 4 AM, with pressure regulator and valve. Band widths 6 - 30 mm
822	With friction brake, without motor.

TECHNICAL SPECIFICATION:

Coiler ID:	* 300 - 315 mm or * 435 - 450 mm
Coiler OD:	* 820 mm
Max coil weight:	300 kg
Air pressure:	6.3 bar 91 psi
Coiler height:	* 960mm
Coiler speed:	0-200 rpm with standard gearing
Space requirement (l x w x h):	1300 x 950 x 1200mm
Weight:	200 kg

* standard size, other sizes available on request



ALO 825

Electrical driven loop table



ALO 825

Designed to maintain an automatically controlled loop of band being fed into ALO's setting machines. The unit has a pair of pneumatically compressed feed wheels that are driven by a frequency controlled AC motor. The two wheel drive system ensures that the band have no slipping problems. For best result, use the option 825-Brush to clean the saw blades from burrs and dirt before, for example, an ALO setting machine.



OPTION:
825-BRUSH: Brush cleaning unit for the band

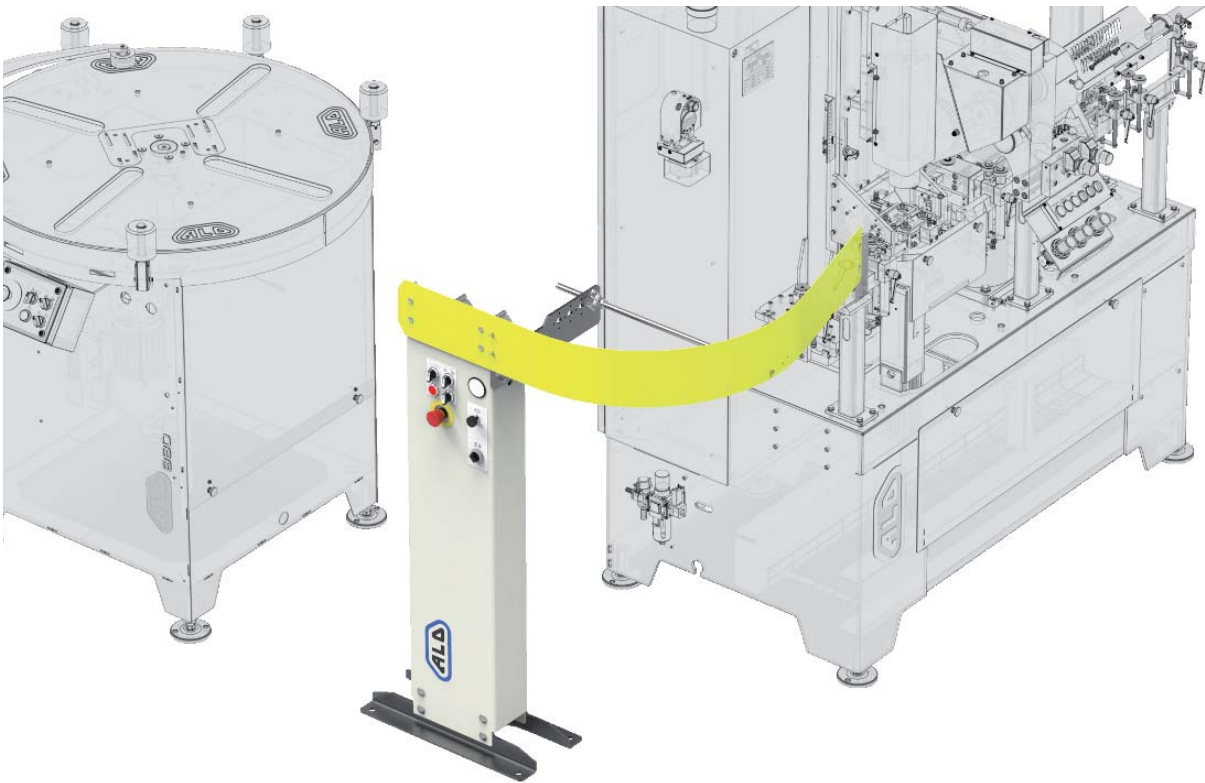
TECHNICAL SPECIFICATION:

Band width:	12 - 100 mm
Band thickness:	0.4 – 1.6 mm
Weight:	110 Kg
Air pressure:	6.3 bar 91 psi
Voltage:	400VAC \pm 10%, 3-phase, 50 – 60 Hz \pm 1%
Space requirement (LxWxH):	1200 x 1200 x 1250 mm



ALO 826

Mechanical brake unit



ALO 826

826 is a non-powered brake unit intended to work together with a take-up system, for example, ALO 880, ALO 863-HD or 106-ESD and is designed to maintain a constant tension of the band blade between 826 and the take-up system.

TECHNICAL SPECIFICATION:

Band width:	12 - 100 mm
Band thickness:	0.4 – 1.6 mm
Weight:	50 Kg
Air pressure:	6.3 bar 91 psi
Voltage:	400VAC \pm 10%, 3-phase, 50 – 60 Hz \pm 1%
Space requirement (LxWxH):	1000 x 1000 x 1225 mm



ALO 831

Electrical double band saw coiler



Expanded center



Collapsed center

ALO 831 has a sturdy design with a welded steel frame and the plates of aluminium have machined slots to facilitate bundling and loading/un-loading of coils with hoist equipment or similar.

The plates are unlocked with a foot operated locking device and can be swivelled to change between the plates to allow the free plate to be loaded/unloaded while the active plate is in use.

Foldable protection rolls that enclose the coil are included as well.

An electric motor with integrated frequency control, regulated in combination with a speed regulation arm ensures a very even and smooth operation, no matter if it operates with an ALO machine or as a "stand-alone" installation.

A control panel with buttons for CW or CCW direction, jog function, and e-stop is mounted on the stand.

The coiler is also available without electric motor instead with manually adjusted friction break, called ALO 830.

Several different expandable coiling centre's including auto band end locking device are available as option.

SELECT:

ALO 90915,-S/90916,-S/90917/90918

Expandable centre with auto band lock

Coil center	Expanded size
90915	320 mm
90915-S	320 mm
90916	450 mm
90916-S	450 mm
90917	500 mm
90918	400 mm

TECHNICAL SPECIFICATION:

831= Electrical drive

Drive motor system:	Electric
Coiler OD:	1000mm
Size from floor to band back:	1100mm
Coiler height adjustment:	±20 mm
Air pressure:	6.3bar
Space requirement(l x w x h):	2300 x 1100x 1700mm
Weight:	380 kg
Standard voltage:	400VAC ±10% 3-phase, 50-60 Hz ±1% directly earthed system,

830=No drive, manually adjusted friction break

Drive motor system:	Electric
Coiler OD:	1000mm
Size from floor to band back:	1100mm
Coiler height adjustment:	±20 mm
Air pressure:	6.3bar
Space requirement(l x w x h):	2300 x 1100x 1700mm
Weight:	380 kg
Standard voltage:	400VAC ±10% 3-phase, 50-60 Hz ±1% directly earthed system, other voltages available upon request.



ALO 863-CTL

Heavy duty electrical powered band saw coiler



An electrical coiler for heavy duty service built to manage the bigger and heavier band saw coils. The coiling plate have machined slots to facilitate bundling and loading/un-loading coils with hoist equipment or similar.

The coiler have pneumatically controlled safety casing around the coiling plate that can be lowered when loading or unloading coils.

An electric motor with integrated frequency control as regulated in combination with a band holder arm and a speed regulation arm ensures a very even and smooth operation, no matter if it operates with an ALO machine or as an "stand-alone" installation.

ALO 863-CTL has a pushbutton panel mounted on the stand with functions for emergency stop, jog function and direction selection - clockwise winding (CW) or counterclockwise winding (CCW).

Several different expandable coiling center's including auto band end locking device are available as option.

SELECT:

ALO 90915/90916/90917/90918

Expandable centre with auto band lock

Coil center	Expanded size
90915	320 mm
90916	450 mm
90917	500 mm
90918	400 mm



Expanded center



Collapsed center

TECHNICAL SPECIFICATION:

Drive motor system:	Electric, frequency controlled motor
Coiler OD:	1250 mm
Size from floor to band back:	1100 mm
Air pressure:	5 bar
Space requirement(l x w x h):	1430 x 2235x 1315mm
Machine weight:	480 kg
Max coiler load weight:	250 kg
Standard voltage:	400VAC ±10% 3-phase, 50-60 Hz ±1% directly earthed system, other voltages available upon request.



SWEDISH QUALITY
 WITH RESPECT FOR THE
 ENVIRONMENT AND
 SAFETY REGULATIONS



ALO 863-HD

Electrical powered band saw coiler



An electrical coiler for heavy duty service built to manage the bigger and heavier band saw coils. The coiling plate have machined slots to facilitate bundling and loading/un-loading coils with hoist equipment or similar.

The coiler have pneumatically controlled safety casing around the coiling plate that can be lowered when loading or unloading coils.

An electric motor with integrated frequency control as regulated in combination with a band holder arm ensures a very even and smooth operation, no matter if it operates with an ALO machine or as an "stand-alone" installation.

ALO 863-HD has a pushbutton control mounted to the stand with functions for emergency stop, jog function and direction selection - clockwise winding (CW) or counterclockwise winding (CCW).

Several different expandable coiling center's including auto band end locking device are available as option.

SELECT:

ALO 90915/90916/90917/90918	
Expandable centre with auto band lock	
Safety center with auto band lock (-S)	
Coil center	Expanded size
90915, -S	320 mm
90916, -S	450 mm
90917, -S	500 mm
90918, -S	400 mm



Expanded center



Collapsed center

TECHNICAL SPECIFICATION:

Drive motor system:	Electric, frequency controlled motor
Coiler OD:	1250 mm
Size from floor to band back:	1100 mm
Air pressure:	5 bar
Space requirement(l x w x h):	1300 x 1390x 1315mm
Machine weight:	480 kg
Max coiler load weight:	250 kg
Standard voltage:	400VAC ±10% 3-phase, 50-60 Hz ±1% directly earthed system, other voltages available upon request.



ALO 880

Electrical powered band saw coiler

A universal model currently introduced as standard to all our machines handling coils of band saw blades. The plate of aluminum has machined slots to facilitate bundling and loading/un-loading coils with hoist equipment or similar.

Foldable protection rolls that enclose the coil are included as well.

An electric motor with integrated frequency control as regulated in combination with a speed regulation arm ensures a very even and smooth operation, no matter if it operates with an ALO machine or as a "stand-alone" installation.

ALO 880 has a pushbutton control mounted to the stand with functions for emergency stop, jog function and direction selection clockwise winding (CW) or counterclockwise winding (CCW).

The coiler are available in several different configurations, see below specification.

SELECT: [ALO 90915/90915-S/90916/90916-S/90917/90918](#)

Expandable centre with auto band lock

Coil center	Expanded size
90915	320 mm
90915-S	320 mm
90916	450 mm
90916-S	450 mm
90917	500 mm
90918	400 mm



Expanded center



Collapsed center



Legend 880-X-Y:

880= Electrical drive

881=No drive, manually adjusted friction break

(X=A) Take up (left to right oriented) Pay off (right to left oriented)

(X=B) Take up (right to left oriented) Pay off (left to right oriented)

(Y=1) Band holder arm **(Y=2)** Speed regulation arm **(Y=3)** Band holder arm and Speed regulation arm

Common for all 880 versions:

Drive motor system:	Electric
Coiler OD:	1000mm
Size from floor to band back:	1100mm
Coiler height adjustment:	±20 mm
Air pressure:	6.3bar
Space requirement(l x w x h):	1300 x 1100x 1200mm
Weight:	185 kg
Standard voltage:	400VAC ±10% 3-phase, 50-60 Hz ±1% directly earthed system, other voltages available upon request.

Model 881 have no drive motor but instead manually adjusted friction break

Standard configurations for our machines:

881 (pay off) and 880-B-2 (take up) for all ALO 191 models

880-A-2 and 880-B-3 are standard coiler for ALO 184 models

880-CTL are standard for ALO 177 Cut to length machine



ALO 880-CTL

Electrical powered band saw coiler

ALO 880-CTL is design to operate together with ALO's cut to length machines.

The plate of aluminum has machined slots to facilitate bundling and loading/un-loading of coils with hoist equipment or similar.

The coiler has a safe protective guarding for a secure work environment and can be lowered when loading or unloading coils. Foldable protection rolls that enclose the coil are included as well.

An electric motor with integrated frequency control as regulated in combination with a band holder arm and a speed regulation arm ensures a very even and smooth operation, no matter if it operates with an ALO machine or as a "stand-alone" installation.

ALO 880 has a pushbutton panel mounted on the stand with functions for emergency stop, jog function and direction selection clockwise winding (CW) or counterclockwise winding (CCW).

Several different expandable coiling center's including auto band end locking device are available as option.



SELECT: [ALO 90915/90915-S/90916/90916-S/90917/90918](#)

Expandable centre with auto band lock

Coil center	Expanded size
90915	320 mm
90915-S	320 mm
90916	450 mm
90916-S	450 mm
90917	500 mm
90918	400 mm



Expanded center



Collapsed center

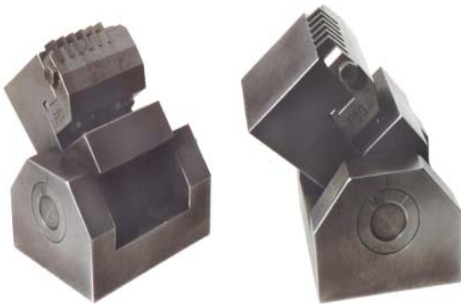
TECHNICAL SPECIFICATION:

Drive motor system:	Electric
Coiler OD:	1000mm
Size from floor to band back:	1100mm
Coiler height adjustment:	±20 mm
Air pressure:	6.3bar
Space requirement(l x w x h):	1300 x 1100x 1200mm
Weight:	215 kg
Standard voltage:	400VAC ±10% 3-phase, 50-60 Hz ±1% directly earthed system, other voltages available upon request.



ALO 61201

Grinding fixture for setting tools type 602, 603, 604 and 605



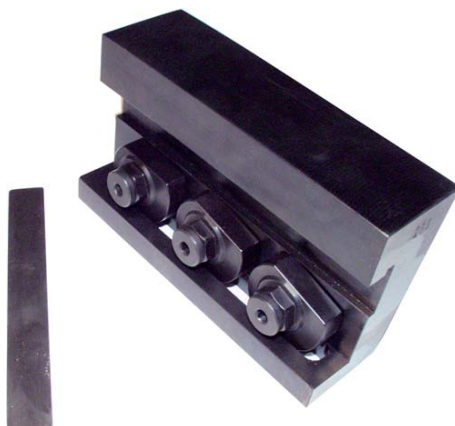
Grinding fixture for setting tools, single as well as multiple, type 602, 603, 604 and 605.

The fixture has a fixed position for grinding of the carbide height as well as scale marks 0-30° for grinding of the angle.

A great tool for repair and regrind of your setting tools.

ALO 61207

Grinding fixture for setting tools type 606 and 607



Grinding fixture for setting tools, mainly for tools type 606 and 607, shorter tools can also be regrinded in this fixture.

The fixture has a fixed position for grinding of the carbide height as well as fixed angle of 5°.

Document No: B61601
Edition: 2
Date: 2019-07-30
Page: 1(1)
Prepared: MS
Approved: HW

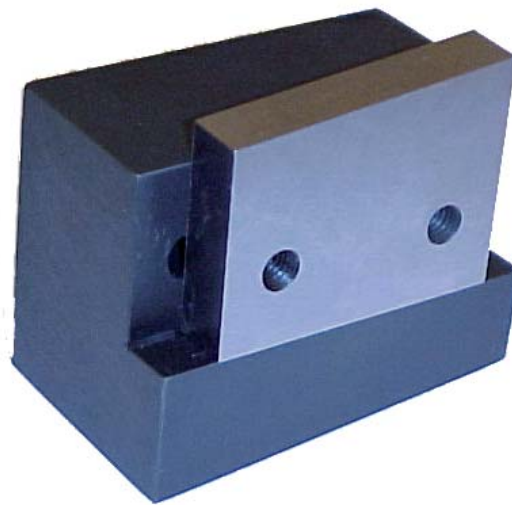
ALO Center AB
Industrivägen 10
SE-792 32 Mora Sweden
+46 250 94900
info@alocenter.se
www.alocenter.se



ALO 61601
ALO 61602

ALO 61601 ALO 61602

Grinding fixture



Fixture to simplify the grinding of the rear cutting edges used in ALO Cut to length machines and ALO table shears. Can be used to all existing cutting edge widths.

MODELS:

- 61601 Fixture to all ALO Cut to length machines and ALO table shears except ALO 177
- 61602 Fixture to ALO 177 Cut to length machine



SWEDISH QUALITY
WITH RESPECT FOR THE
ENVIRONMENT AND
SAFETY REGULATIONS



ALO 90915,-S ALO 90916,-S ALO 90917,-S ALO 90918,-S

Coil center with auto band lock Safety center with auto band lock (-S)



ALO coil center

The new innovative coiling center have a smart band end locking device that easy secure the band end if you taking up bands, and automatically will release the band end when you are paying off bands.

The center will fit to any ALO coiler and are easy to expand with rigid joints and handle that folds down when the center is expanded. To collapse, simply lift the handle.

The band end locking device is made out of wear resistant material and rest in a socket, but can easy be flipped for coiling clockwise (CW) or counterclockwise (CCW).

Besides the joints and band lock, the center is made out of wear resistant light weight plastic and are easy to lift and remove compared to old type of centers.

-S is equipped with a safety lock device securing the center with four hooks into the coil plate. This center is preferable when working with heavy and big blades.

The coil center are available in different configurations, see below specification.



Expanded center



Collapsed center
 Equipped with a safety lock

HIGHLIGHTS

- Band locking device secures the band end at take-up and automatically release at pay-off operation
- Will fit all ALO coilers that have a removable coiling center
- Easy to change between clockwise/counterclockwise coiling
- Lightweight, easy to lift and move
- Easy and fast to operate and to load & unload
- Coil center with -S is equipped with a safety lock device

TECHNICAL SPECIFICATION	90915, -S	90916, -S	90917, -S	90918, -S
Expanded size (OD):	320 mm	450 mm	500 mm	400 mm
Height (not including handle)	25 mm	40 mm	40 mm	40 mm
Weight:	2,25 kg	3,5 kg	4,8 kg	3,5 kg

Other customer requirements may be discussed between customer and ALO.

