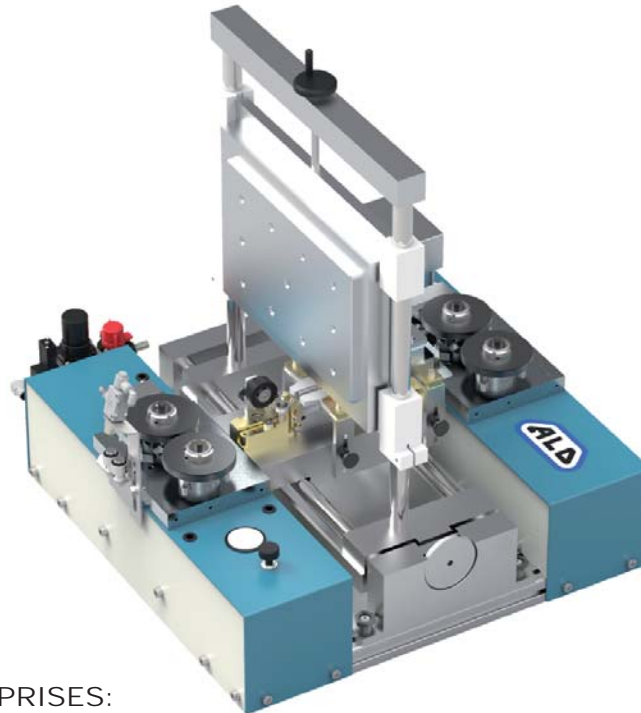


## ALO 192-S

### Induction edge hardening of utility knives



#### THE SYSTEM COMPRISES:

- High efficiency and low energy consumption generator with air-cooled oscillator tube.
- Automatic anode current control keep the anode current constant during the whole coil.
- Automatic flash guard protect the system against damage from flash-overs.
- Band feeder with a pulling 4-wheel drive system designed for accurate speed and guiding.
- Pulse transducer monitors the feed speed.
- Fast and easy start up and change over.

#### THE SYSTEM COMPRISES:

- Feed unit
- Hardening generator and inductors
- Closed coolant system

#### CAPACITY:

Band width 20 - 26 mm  
Band thickness 0.65 - 0.85 mm  
Maximum depth of hardness 0.5 mm  
Hardening generator frequency is 27 MHz.

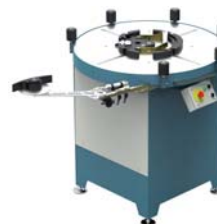
#### OPTIONS / ACCESSORIES:



ALO 822  
Double coiler



ALO 831  
Double coiler



ALO 880  
Electric coiler



ALO 106 CUBE  
Coil handling system

## MACHINE DESCRIPTION

### Band feeder

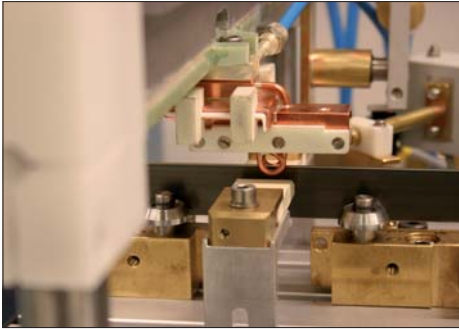
The band feeder consists of two pairs of inclined idling guide rollers. One of the rollers is equipped with a pulse transducer which monitors the feed speed. Spring loaded band guide system before and after the inductor ensures very stable conditions during the hardening operation.

### Generators

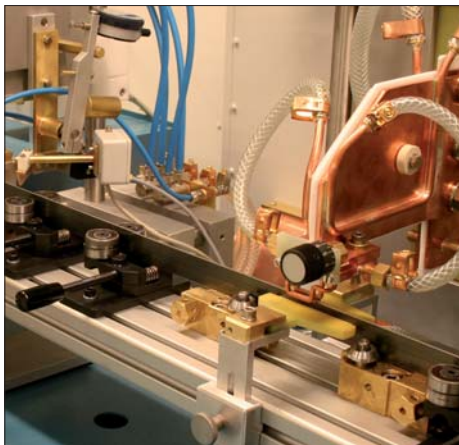
The hardening generator is enclosed in separate aluminium cabinets, equipped with separate oscillating circuits connected to the cabinets via coaxial cables. The generator is air cooled, thus limiting the cooling water requirements to inductors and oscillating circuit only. The hardening generator is equipped with an automatic anode current regulator, thus ensures stable power during the hardening operation. The generator is also equipped with a chopper which will control the output power in relation to the speed during start up. When full speed is achieved the anode control system takes over.

### Inductors

The interchangeable inductors are made of copper tubing and can be custom made for different pitches and band gauges. Adjustable in height for different blade widths and sideways for different blade gauges.



*Hardening unit with flash guard*



*Hardening generator with automatic anode current control*

## TECHNICAL SPECIFICATION:

Band width:	20 - 26 mm
Band thickness:	0.65 - 0.85 mm
Capacity:	10 - 25 m/min
Air pressure:	6.3 bar
Standard voltage:	400VAC $\pm$ 10% 3-phase, 50-60 Hz $\pm$ 1% directly earthed system, other voltages available upon request.
Space requirement (l x w x h):	1 x 2 x 2m
Weight:	300 kg
Power consumption (at max output power):	10 kVA
Other customer requirements may be discussed between customer and ALO.	